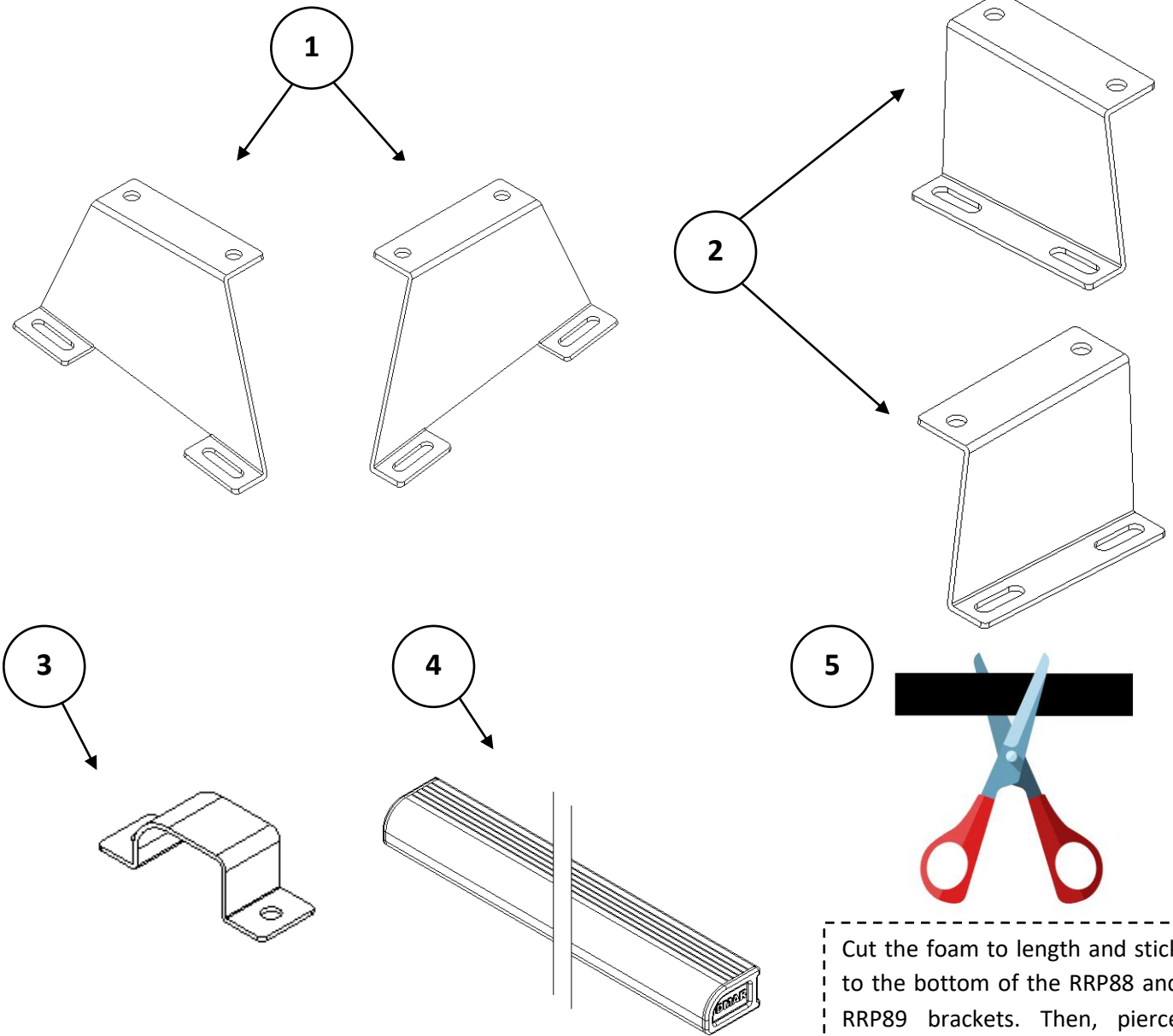


SUPPLIED FIXING KIT – DM61

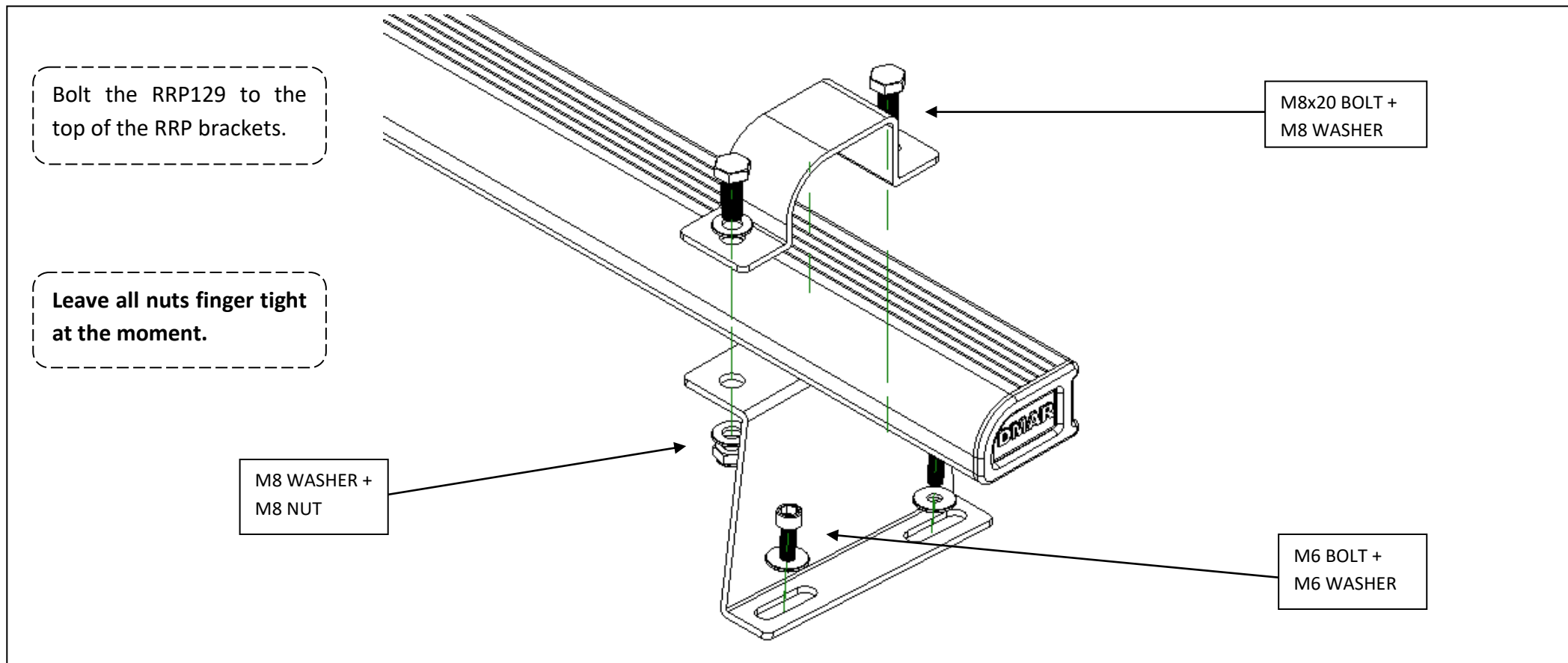
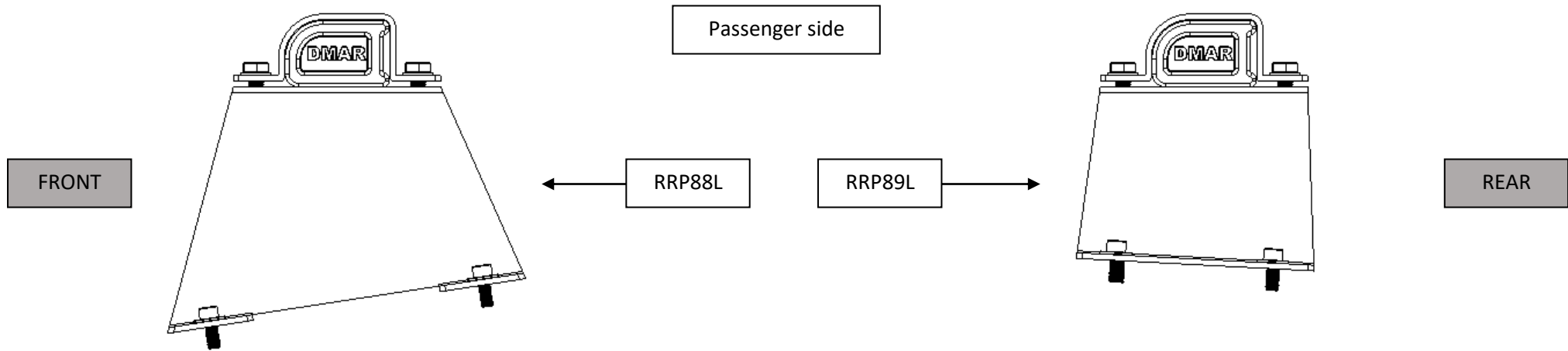
DESC	QTY
M8X20mm BOLT	8
M8 NYLOC NUT	8
M8 WASHER	16
M6 WASHER	8
M6 BOLT	8

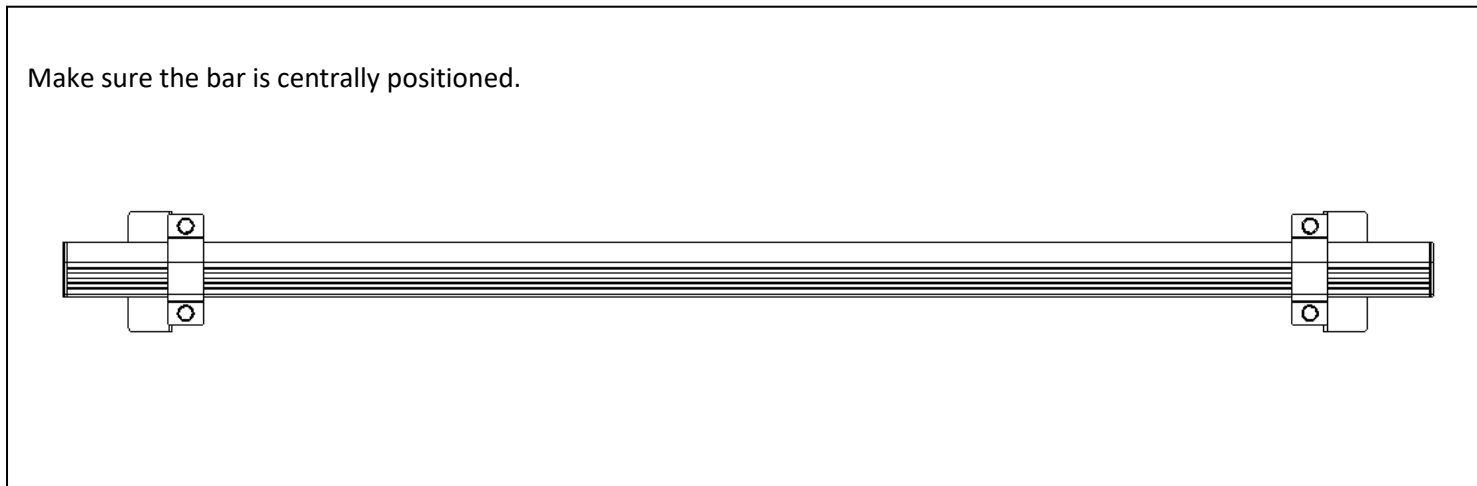
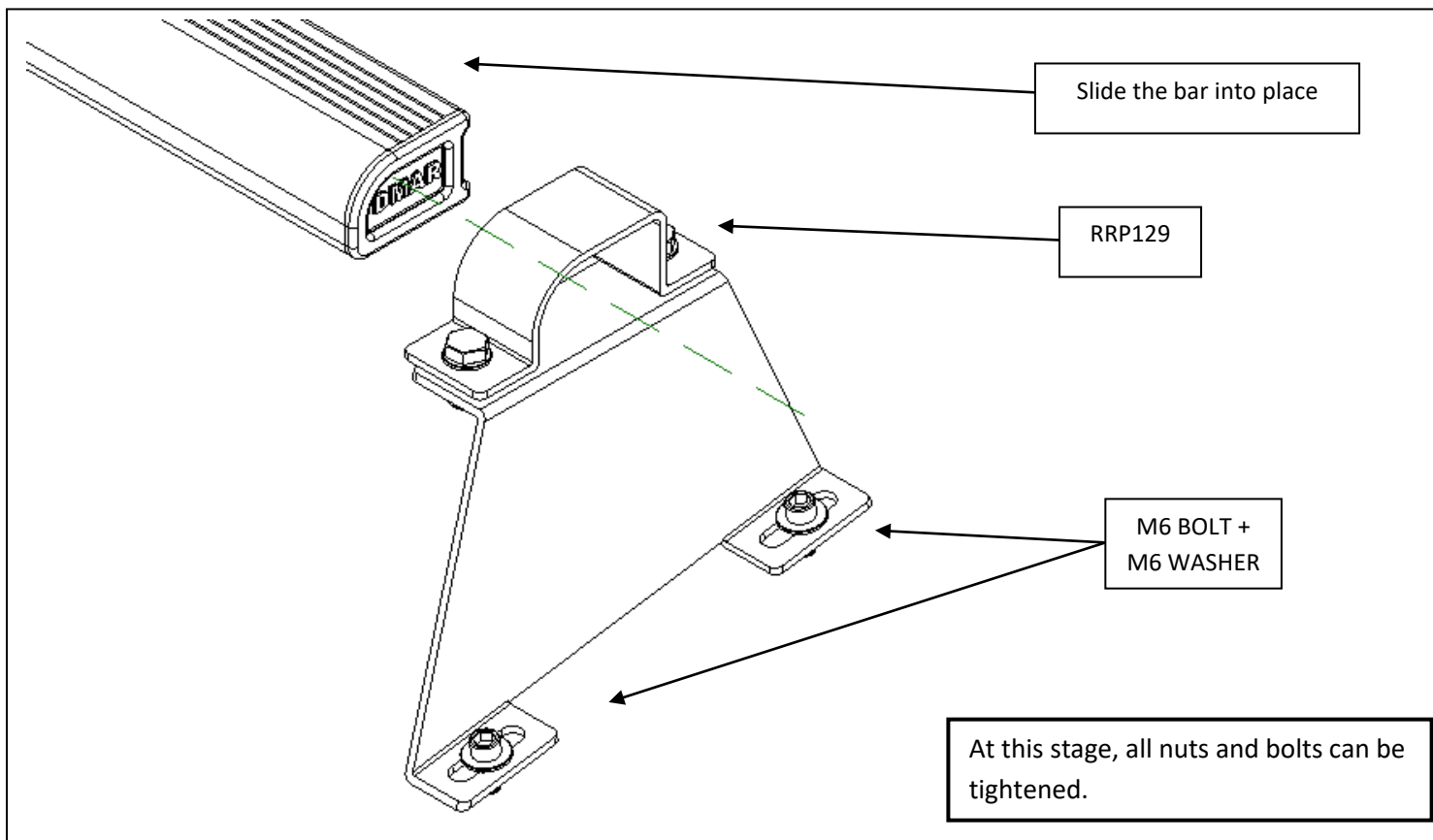
SUPPLIED COMPONENTS

#	DESC	QTY
1	RRP88	1 L, 1 R
2	RRP89	1 L, 1 R
3	RRP129	4
4	D BAR	2
5	25mm FOAM	400mm



Cut the foam to length and stick to the bottom of the RRP88 and RRP89 brackets. Then, pierce through central hole.





Once in position, tighten all fixings to **8Nm**.
Periodically check all fixings.



NOTES: Do not exceed vehicle manufacturers roof loading recommendations. Loads must be evenly distributed. All fixings and clamps need to be checked regularly for fatigue or wear and tightened or replaced when required. Paint damage to be touched up to prevent corrosion occurring. No liability is accepted by DEMAR for damage to vehicle or claims arising from use of roof rack. User must ensure all Health and Safety recommendations are complied.

